



Taraval Station Newsletter Mini Updates



Community Members,
Happy Halloween.
Slow down and be especially alert in residential neighborhoods.

Keep Kids Safe – Slow Down for Trick or Treaters



sanfranciscopolice.org/halloween

Decorate costumes and bags with reflective tape or stickers. Carry a flashlight.



sanfranciscopolice.org/halloween

Party Responsibly



Captain Robert Yick

Commanding Officer Taraval Station

San Francisco Police District Station

#CommunityMeeting

- Community Concerns
 - District Crimes and Updates
 - Upcoming Community Events
 - Response to Community Questions and Concerns
- sanfranciscopolice.org/stations



Next Community Meeting:

Tue., Nov. 20, 2018
6:00 pm - 7:00 pm

Minnie & Lovie Ward Rec Center
650 Capital Ave

Thank you for subscribing to our Newsletter.

Please follow us on:

Twitter:

@SFPDTaraval

Website: <http://www.taraval.org>

Inside this issue:

Page:

- 1 - Newsletter Updates
- 2 - Happy Halloween
- 3 - Halloween Safety Tips
- 4 - Thanks to all who attended the Police Commission Presentation
- 5 - Powered Scooter Program
- 6 - Movies in McCoppin Square - Oct
- 7 - Park Smart
- 8 - SF Safe Crime Prevention Through Environmental Design
- 10 - SF Safe Recommendations of CCTV System
- 12 - Previous Weeks Notable Incidents
- 15 - Crime Maps (Oct 1-25)
- 18 - Beware of Scams
- 19 - Definition of Suspicious Activity
- 20 - Definition of Community Policing
- 21 - Make the Right Call
- 22 - Join SFPD
- 23 - Your Feedback
- 24 - Taraval Phone List



**Happy Halloween
from SFPD!**

Be Aware!

Drive Slow!

**Children are
walking in the area!**





Halloween Safety

Help make the evening safe!

Halloween has been celebrated on October 31st in the United States since the early 1800's and is traditionally a family-oriented holiday when children get to dress up and enjoy candy and other treats. Halloween is a time for fun with friends, family and neighbors with children trick-or-treating door-to-door. Most people are friendly and nice but there are some who play cruel tricks on children and ruin the good time.

In order to assist San Francisco's community in enjoying this fun-filled holiday as safely as possible, the SFPD has compiled the following. So be sure to take a flashlight and/or reflective clothing when walking in the neighborhood with your little goblins.

Halloween Safety Tips

- Children should trick-or-treat during daylight hours.
- Children should never be allowed to go out alone on Halloween.
- Children should never eat any treats until they have been examined.
- All fruit should be cut and and closely examined before eating.
- Advise children that they should never enter strangers' homes.
- Never invite children into your home.
- Children should never accept rides from strangers.
- Children should never take shortcuts through backyards or alleys.
- Set a specific time limit for your children to be out on Halloween night.
- Give wrapped homemade treats only to children you know.
- Instruct children not to stray from their group.
- A responsible adult should escort children while trick-or-treating.
- Adult escorts should carry flashlights.
- Don't leave your home unattended on Halloween night.
- Keep pets inside your home or another safe place on Halloween night.
- Children should walk, not run, during their trick-or-treat activities.
- Parents should know what route their children will be taking.
- All costumes should be made of light-colored, fireproof material.
- Children should wear proper fitting, comfortable costumes and shoes.
- Props such as toy guns or swords should be made of pliable material.
- Realistic replica firearms should never be used.
- Masks should not be worn if they impair vision.
- Wigs should be fireproof and should not restrict vision.
- Children should always use sidewalks, not the street, for walking.
- Children should look in all directions before crossing the street.
- Motorists should drive slowly, yield to young pedestrians and watch out for Trick-or-Treaters darting into the street.



If you suspect that candy may be tainted, please bring it to any of SFPD's [ten district police stations](#) for disposal.



TARAVAL STATION



2018 Police Commission Meeting

Thank you to all of who attended the Police Commission Presentation.

**Our monthly Captain's community meeting will resume next month on
Tuesday, November 20 6:00pm
Minnie & Lovie Ward Recreation Center (650 Capitol Ave)**





Powered Scooter One Year Pilot Program

Starting October 15th, powered scooter companies, Scoot and Skip, will roll out their scooters as part of our one-year pilot program. Scoot and Skip were chosen out of 12 applications because they prioritized the city's concerns around safety, disabled access, equity and accountability.

Therefore, we are hopeful powered scooters will be a great way to get around San Francisco. The tips below are meant to help you ensure a convenient ride as we determine if this mobility options is right for our city.

Do's:

- **Check brakes and wheels before riding.** Report damaged scooters to the appropriate company.
- **Wear a helmet and follow traffic rules.** Only ride in the bike or travel lane. Obey traffic signs and signals.
- **Park with care on the sidewalk.** Park near bike racks or by the curbside.

Don'ts:

- **Do not ride on sidewalks.** Scooters are also not allowed on the Embarcadero Promenade.
- **Do not park in ramps or at blue, yellow or white curbs.** Blocked paths can be dangerous for people with disabilities.
- **Don't block sidewalks or building entrances.** Leave upright and keep sidewalk clear.

For more information, visit www.sfmta.com/escooter. Report improperly parked scooters to the scooter company or [311](tel:311).

DMV's Link on Scooters:

<https://www.dmv.ca.gov/portal/dmv/detail/motorcycles/motorcycles>

Direct links to the current permitted companies:

<https://skipscooters.com/>

<https://scoot.co/san-francisco/>



2018
MOVIES IN MCCOPPIN
 廣場電影欣賞活動
 EVERY FRIDAY IN OCTOBER
 TARAVAL STREET & 23RD AVENUE



HIDDEN FIGURES
 OCTOBER 5

NASA's Ames Research Table!



STAR WARS
 EPISODE VII
 THE LAST JEDI
 OCTOBER 12

Stormtroopers and R2D2!



WONDER WOMAN
 OCTOBER 19

Meet Wonder Woman in person!



Disney PIXAR
COCO
 OCTOBER 26

Día De Los Muertos Face Painting!

FREE MOVIES! FREE POPCORN! FAMILY FUN!
 免費爆谷! 免費電影! 家庭歡樂活動!



6:00PM: KIDS ACTIVITIES BEGIN 下午6時: 兒童活動開始
 7:15pm: SHOWTIME! 下午7時15分: 電影開始放映!





Park

Smart!

**If you love it, don't leave it.
Car thieves only need
seconds to break in and
steal your valuables.**



CRIME PREVENTION THROUGH ENVIRONMENTAL DESIGN

Crime Prevention Through Environmental Design (CPTED)

THE BASIS OF CPTED

The proper design and effective use of the built environment that can lead to a reduction in the fear and incidence of crime and an improvement in the quality of life. The goal of CPTED is to reduce opportunities for crime that may be inherent in the design of structures or in the design of neighborhoods.

CORE STRATEGIES

- Natural Surveillance (Visibility)
- Natural Access Control
- Territorial Reinforcement
- Maintenance

NATURAL SURVEILLANCE

Design the space to allow visibility by legitimate users and keep possible intruders under observation. Provide a good visual connection between residential and/or commercial units and public environments such as streets, common areas, parks, sidewalks, parking areas, and alleys.

USER TIP

DO NOT take the road less traveled. Stick to a highly populated area and try to stay in front of buildings with windows; the more windows the better. Properly placed windows can create the appearance that an area can possibly be watched by someone.



TERRITORIAL REINFORCEMENT

Territorial Reinforcement is the use of physical attributes that expresses ownership such as fencing, pavement treatments, signage, and landscaping.

DID YOU KNOW?

Most architects and designers build aesthetically pleasing structures that unintentionally create unsafe spaces. For example: ambush points and/or sleeping areas

Knowing what to look for in your environment is essential in crime prevention and/or becoming a victim of crime.

KNOW YOUR ENVIRONMENT

Lighting is an important element in any site design. Whether a single house or a shopping mall, appropriate lighting techniques should be used.



- Cast light against vertical surfaces, such as walls. If a wall is adequately light in color, it will reflect light into the adjacent spaces.
- Emphasize key features such as celebrated doors and walkways.
- Avoid abrupt transition between the brighter emphasized areas and relatively darker less emphasized areas.
- Use deflectors, reflectors, and fogged lenses to avoid showing a bright naked bulb which causes glare.
- Remember to illuminate the rear wall of an important space such as a lobby.

NATURAL ACCESS CONTROL

Natural Access Control means of controlling access to a site. People are physically guided through a space by the strategic design of streets, sidewalks, and building entrances.

USER TIP

AVOID shortcuts like an alley or back entrance of a building. Ambush points and/or sleeping areas are often out of sight.

MAINTENANCE

Cleaning, repairing, and landscaping needs to be performed routinely to encourage use of the space for the intended purpose and discourage abnormal and criminal use.

USER TIP

Bushes are not to be higher than **2 feet**. Tree canopies are not to be lower than **6 feet**.

LIGHTING



EDUCATING YOUR EYES TO HELP PREVENT CRIME

Crime Prevention Through Environmental Design (CPTED)

YES



FOR RESIDENTIAL / BUSINESSES

LIGHTING

Illuminate areas with cut off fixtures to focus the light onto the ground.

NOTE It takes 20 minutes for your eyes to adjust from light to darkness.

FENCING / WALLS

Allow transparency for surveillance **not** to be used to create exclusiveness.

BARRIERS / LANDSCAPING

Create ownership, define territory, and control access to your property.

Additional security such as hostile landscaping plants like the

Flying Dragon Tree or Chinese Bitter Orange Tree can be a deterrent.

TRANSITION ZONES

Choose a foundation that indicates the transition between public > semi-public > semi-private > private

BUSINESSES

CELEBRATED ENTRYWAY

Create a focal point of entry to demonstrate ownership.

If your property blends into the environment you're likely to attract loiters.

OUTDOOR SEATING (BENCHES)

Opt for a bench with a low arm rest in the middle to prevent sleeping on the bench.

EYES ON THE STREET

Arrange seating near windows facing the street to allow people to be your eyes.

USE MIRRORS

Use 90 degree mirrors to help people see corners and other potential blind spots.

NO



KNOW YOUR ENVIRONMENT

DO NOT

Let anyone tailgate you into your residence or workplace via door or garage.

YOU'RE NOT BEING RUDE by letting individuals use their own key for entry.

DO NOT

Park or walk near overgrown bushes/shrubs that provide concealment opportunities.

Remember the **2 foot 6 foot rule** for bushes and tree canopies provided on the first page.

DO NOT

Go into a store that has more than 10% of their windows covered by advertisements.

Advertisements can provide concealment opportunities to offenders.

AVOID

Shortcuts like an alley or back entrance of a building; look for the celebrated entryway.

AVOID

Areas with no see-through decorative fencing that allow potential offenders to hide.

AVOID

Parking in parking garages that don't allow pedestrians to see into structure.

When parking please **PARK SMART** (Take ALL of your valuables with you.)



FOR MORE INFORMATION PLEASE CONTACT

San Francisco SAFE | Phone - (415) 553-1984 | Email - info@sfsafe.org



TARAVAL STATION

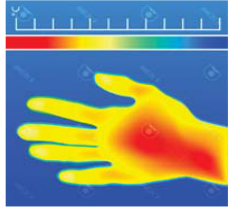


SEPTEMBER 2018



HIGH RESOLUTION

If you connect your camera to a DVR or other device, it will also need to be HD Compatible.



INFRARED (IR)

Built-in IR cut-switch that automatically enables/disables the infrared depending on the light conditions.

IN THE KNOW

The camera's viewing angle determines how much space the camera will cover. Wider angled lenses help cut down the # of cameras required for overall coverage. Video Surveillance should be utilized at your property with at least one camera facing towards the address street and camera should be registered with the District Attorney's office

REGISTER YOUR CAMERA
sdistrictattorney.org/register-your-camera

RING SYSTEM

www.ring.com

(Basic) Video Doorbell Battery-powered	Video Doorbell #2 Quick-release battery	Pro Hardwired
(Basic) Spotlight Cam LED spotlights and siren	Mounted Hardwired LED spotlights and siren	Alarm Security Kit (Not Central Monitored)

RING PROTECTION PLUS

Professional monitoring with cellular backup, plus unlimited video recordings.

NEST

www.nest.com

Nest Cam Outdoor Hardwired	Nest Cam Indoor Hardwired	Nest Hello Doorbell Hardwired
NEST AWARE		
Monthly subscription for 24/7 Continuous Recording Intelligent Alerts Clips and Timelapses Activity Zones		
NEST Alarm System		



SAFETY AWARENESS FOR EVERYONE
www.sfsafe.org
(415) 553-1984



SAFE and SFPD recommend the use of Closed Circuit Television System for Video Surveillance

CCTV relies on strategic placement of cameras, and observation of the camera's input captured on monitors.

DISCLAIMER

The information provided is intended to assist you in improving the overall level of security of your home or property. It is not intended to replace existing or proposed security measures.

SAFE and SFPD do not endorse any particular company and their cameras.

The cameras found on this document are the most commonly used for residential dwellings.



TARAVAL STATION



FEATURES

- View and Record in wide-screen from remote viewing
- Pre-Installed 500GB Hard Drive (expandable) up to 3TB
- Longer recording times (up to 30 days) available with use of motion detection and/or resolution adjustments
- IP 66 Indoor/outdoor weatherproof cameras
- 24 LEDs for night vision



Arlo Pro 2 (Arlo.com)

FEATURES

- Works with Alexa for voice control
- Flexible powering options use wire-free, plugged in
- 7 Days of Cloud Recordings
- 855 nm LEDs for night vision(25 ft)
- Arlo Smart adds powerful intelligence to your cameras. Customize alerts to detect people, specific zones, and contact first responders right from your smart phone's lock screen (optional service, includes 1-month trial)

Overview

Note: The following information is specific to commercial and retail establishments; however, can be applied to any location utilizing video surveillance.

Basic set up and maintenance problems can reduce the effectiveness of many systems.

- Resolution – is it good enough for facial recognition.
- Camera position – are they positioned for clear view of suspect.
- Lighting – is it adequate to capture clear images both day and night.
- Image detail – is the recorder set up for best image detail.
- Maintenance – are you maintaining your system properly so it can do its job when needed?

Set Up and Maintenance

- **Backlighting** – when sun is bright at doorway, images in front appear darker or even black. Use another light source inside to counteract back light.
- **Low Frame Rate** – saves on drive space and gives better image quality, but you may not get an image at all (now you see him; now you don't).
- **Obstructions** – displays and other objects blocking view **should be eliminated.**
- **Focus Problems** – must check system regularly to prevent.

Minimum camera resolution should be **480 horizontal lines.**

Good cameras have **faster lenses** (allows more lighting), larger maximum aperture opening (lets more light into the focal point of the camera) and controls image brightness (allows brighter images in dim lighting) – the more lighting, the more depth of field (greater depth of field; the more of the scene is in focus).

Focal Length – some cameras zoom in and out while others have a fixed focal length. The type of cameras used depends on what your needs are.

Transaction Areas – anything at a transaction point (cash register, toll booth, etc.), the subject's head should fill at least 15% of the total image in the frame, giving the detail you need.

Lines of Sight – lines of sight are always critical, make sure there are no obstructions.

Site Plan – the right site plan is crucial (retail store blueprint or diagram). Key camera spots are at transaction points (cash registers and entry/exit points) – the more cameras, the better.

You want good camera overlap (you want multiple chances to capture good images). Extra coverage is also needed for aisles, restrooms and other key points.

Camera Height – placement is very important, make sure it is as close to eye-level as possible. Otherwise, you might lose out to a baseball cap.

With a good site plan you can make sure you don't have any blind spots (you can toy around with camera positions, and do a test recording to see that you are getting what you want).

Interior Lighting – interior lighting can balance bright light from one direction (back lighting) by adding another light source from a different location (add a bank of lights).

Example: Artificial lighting (inside store) for cameras may be good in the morning, but by noon, the sun (through a doorway or window) can blow the entire frame out (add lighting to fill in for afternoon sunlight). Adding more light from a different direction balances lighting, giving better camera clarity (if sunlight is shining through large windows you can tent windows or add screens.

Exterior Lighting – if lights are on timers, you must adjust appropriate to seasonal changes (Fall/Winter: gets dark earlier. Spring/Summer: gets dark later).



Amcrest.com (CCTV)

For more information please contact San Francisco SAFE | Phone - (415) 563-1904 | Email - info@etsafe.org

Page 2 of 2



Previous Weeks Notable Incidents

*** Not all crimes are reported in the daily report, Address shown are the "Unit Block" where the incident took place.

Daily Crime Report :: Sun – Oct 14, 2018

Discharging a Fire Arm at an unoccupied Vehicle

5:58 pm

2500 21st Ave

The victim entered Taraval Station to report that he had found a small bullet hole in his vehicle's door. The victim stated that he believed that a neighbor had vandalized his vehicle but did not provide further information.

Robbery

9:16 am

700 Taraval St

Officers responded to a report of a robbery. The victim, a pharmacist employed at Safeway, reported that the suspect initially asked him what time the pharmacy opened. When the victim opened the door to enter the pharmacy, the suspect suddenly pushed the victim inside and brandished a gun while demanding drugs. A store alarm sounded shortly afterwards and the suspect grabbed some medication that was nearby and immediately fled the store.

Assault

8:28 pm

Lincoln Way & 8th Ave

Officers responded to a report of an assault. The victim reported that he had been seated on the sidewalk with his legs extended when the suspect suddenly walked by and kicked the victim's feet. The suspect then went to his vehicle, took out a bat and struck the victim with it. The victim responded by chasing after the suspect but the suspect immediately fled the area in his vehicle.

Daily Crime Report :: Mon – Oct 15, 2018

Burglary – Robbery – Assault

2:53 am

2100 40th Ave

Officers responded to a report of a robbery. The victims reported that the incident occurred just as they had arrived home and were pulling into their driveway. As the victims were opening their garage door and walking towards their house, two suspects approached them with one suspect holding a gun in his hand. The suspects demanded money from the victims but were told that the victims did not have any money in the house. The suspects responded by taking jewelry from the victims and also stealing the victim's vehicle and fleeing the area. Responding officers recovered the stolen vehicle but were unsuccessful in locating the two suspects.

Robbery

8:55 pm

Capitol Ave & Thrift St

Officers responded to a report of a robbery. The victim reported that she had just exited a MUNI when the suspect approached her and punched her. The suspect then stole the victim's cell phone and purse before fleeing the area.

Discharging a Firarm

11:10 pm

600 John Muir Dr

Officers responded to the hospital regarding a suspect who had shot himself. The suspect stated that he had been cleaning his firearm when he accidentally pressed on the trigger. After further investigation, the firearm was confiscated and **the suspect was cited.**



Notable Incidents (Cont.)

Daily Crime Report :: Tue – Oct 16, 2018

Warrant Arrest – Arrested

5:24 pm

400 Gonzalez Dr

Officers responded to assist Animal Care and Control and met with the subject regarding his dog. However, a computer check on the subject revealed a warrant for his arrest. **The subject was arrested.** Animal Care and Control took custody of the subject's dog.

Attempted Bank Robbery

3:40 pm

200 Winston Dr

Officers responded to a report of a bank robbery. The victim, a bank teller, reported that the subject had approached her and told her to give him all the money but the victim thought the subject was joking. However, the suspect asked for the money again and the victim was fearful that he would hurt her. Shortly after, the suspect walked away from the victim.

Daily Crime Report :: Wed – Oct 17, 2018

Battery

1:39 pm

1100 Junipero Serra Blvd

Officers were on patrol and were flagged down regarding a fight. Party One stated that he had been waiting a long time behind a para-transit vehicle to get gas and asked Party Two to move, who responded rudely and dismissively to the request. Party One attempted to take a photo of the vehicle, which led to an argument and both parties punching each other. Party Two stated that while they were arguing about moving the vehicle, Party One suddenly punched him. After further investigation, both parties declined to press charges.

Trespassing – Arrested

7:19 am

200 Vidal Dr

Officers responded to a report of a trespasser. Responding officers located the suspect and detained him. After further investigation, it was revealed that the suspect was in violation of a stay away order for the location. **The suspect was arrested.**

Warrant Arrest – Arrested

4:26 pm

3200 20th Ave

Officers were on patrol and observed a parked vehicle with an expired registration sticker. The officers conducted a computer check which confirmed the expired registration. While the officers were investigating, the driver returned to the vehicle. A computer check on the driver revealed a warrant for his arrest. **The driver was arrested.**

Daily Crime Report :: Thu – Oct 18, 2018

Assault

1:28 pm

Lawton St & 9th Ave

The suspect entered Taraval Station to report an assault. The victim reported that he was an employee for a paving construction company and had heard a commotion while he was working. When he went to investigate, the victim observed a vehicle trying to drive through a street that had been blocked to traffic. The victim made contact with the driver and advised her to drive around but the driver refused to comply and attempted to intimidate the victim by revving the engine and driving forward. The driver then drove around the victim but struck the victim's knee with her car. The driver then fled the area.



Notable Incidents (Cont.)

Warrant Arrest – Arrested

4:00 pm

200 Thrift St

Officers received information concerning an arrest warrant for DUI and child endangerment on a suspect. The officers responded to the suspect's location and detained her without incident. The suspect was arrested.

Daily Crime Report :: Fri – Oct 19, 2018

Warrant Arrest

2:34 pm

UC Hospital

Officers received information regarding a suspect's, who had an arrest warrant, location. The officers responded to the suspect's location, which was at UC hospital. The suspect was treated by hospital staff and discharged before he was later arrested.

Daily Crime Report :: Sat – Oct 20, 2018

Warrant Arrest – Arrested

5:14 pm

West Portal & Vicente St

An officer was on patrol in an area which had a history of frequent shoplifting incidents and was flagged down with a shoplifting report. The officer and several other units responded to the shoplifting report and located the suspect. The suspect was detained and a computer check on the suspect revealed a warrant for his arrest. The suspect was arrested.

Recovered Stolen Vehicle – Possession of Burglary Tools – Warrant Arrest – Arrested

5:14 pm

1800 17th Ave

Officers were on patrol and observed a vehicle with an expired registration sticker. The officers conducted a traffic stop but the driver, the suspect, refused to stop his vehicle. Suddenly, the suspect exited the vehicle and attempted to flee on foot. The suspect was successfully detained without incident but the suspect refused to provide his name to the officers. A search located an ID card belonging to the suspect and a computer check revealed that the suspect had an arrest warrant. After further investigation, it was also determined that the suspect's vehicle had been stolen without the owner's knowledge. The suspect was arrested.

See More

Daily Crime Reports

Do you want to know what happens daily in the District?

Read more at <http://www.taraval.org/?cat=14>

Note: Not all crimes are reported

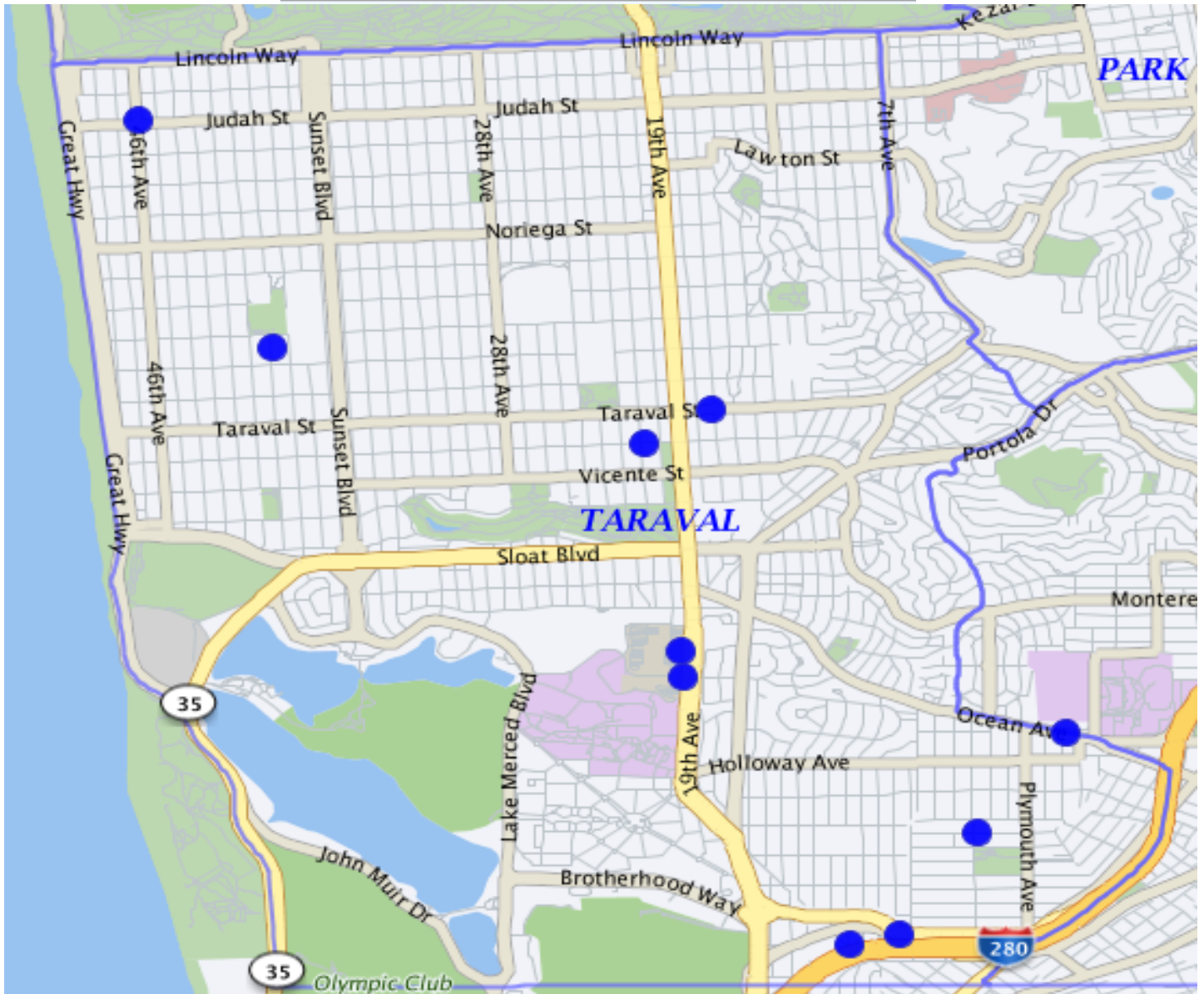


TARAVAL STATION



Robbery 10/01/18 – 10/25/18

ROBBERY	Firearm	3
	Knife or Cutting Instrument	0
	Other Dangerous Weapon	0
	Strongarm (no weapon)	7
		10



If the dot does not add up to the numbers, there may be locations with numerous incident with the same address.

*Note: The map accurately reflects the information available at the time of preparation. Numbers may or may not change as more information becomes available.

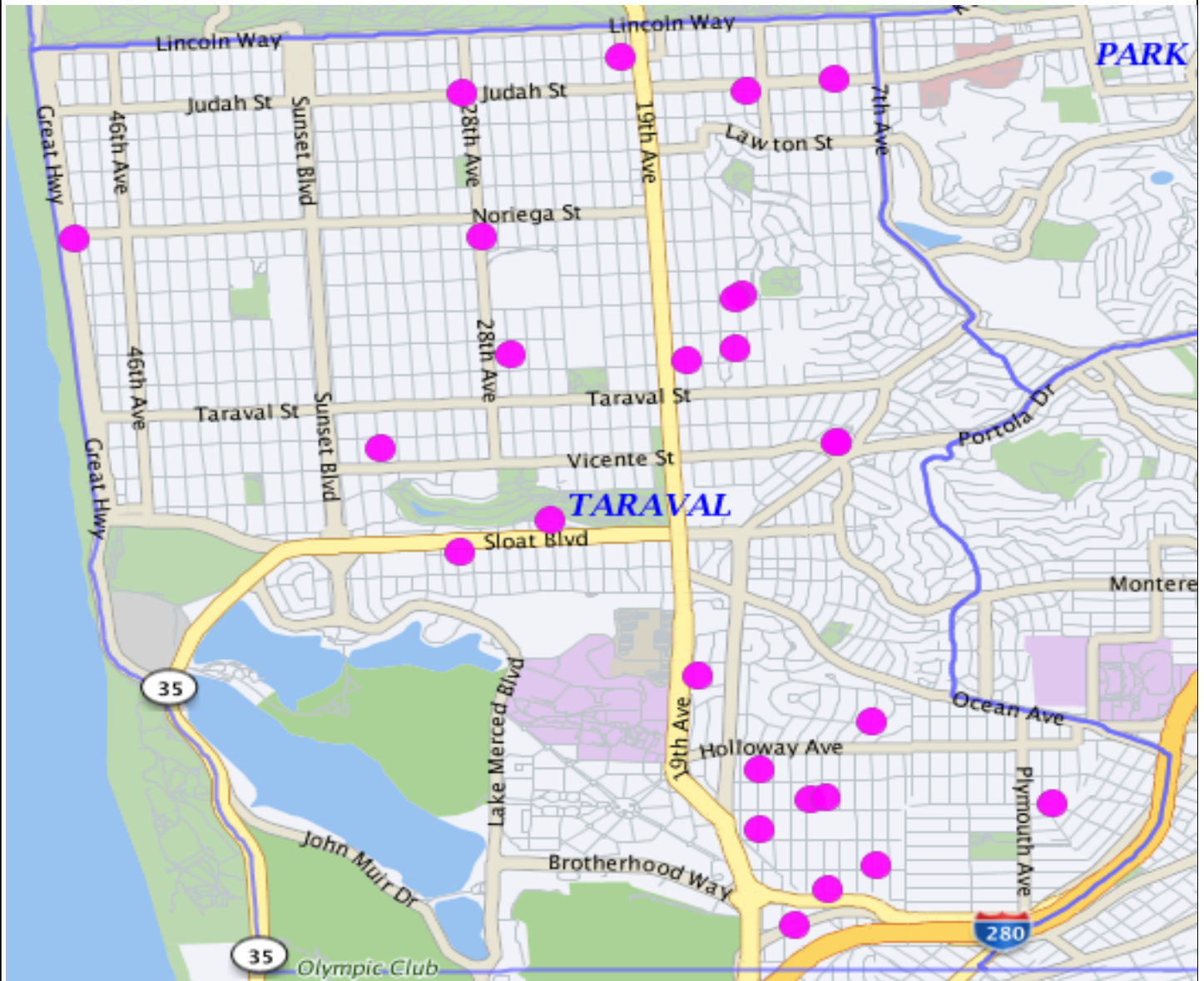


TARAVAL STATION



Burglary 10/01/18 – 10/25/18

BURGLARY	Attempted Forcible Entry	3
	Forcible Entry	15
	Unlawful Entry - No force	8
		26



If the dot does not add up to the numbers, there may be locations with numerous incident with the same address.

*Note: The map accurately reflects the information available at the time of preparation. Numbers may or may not change as more information becomes available.

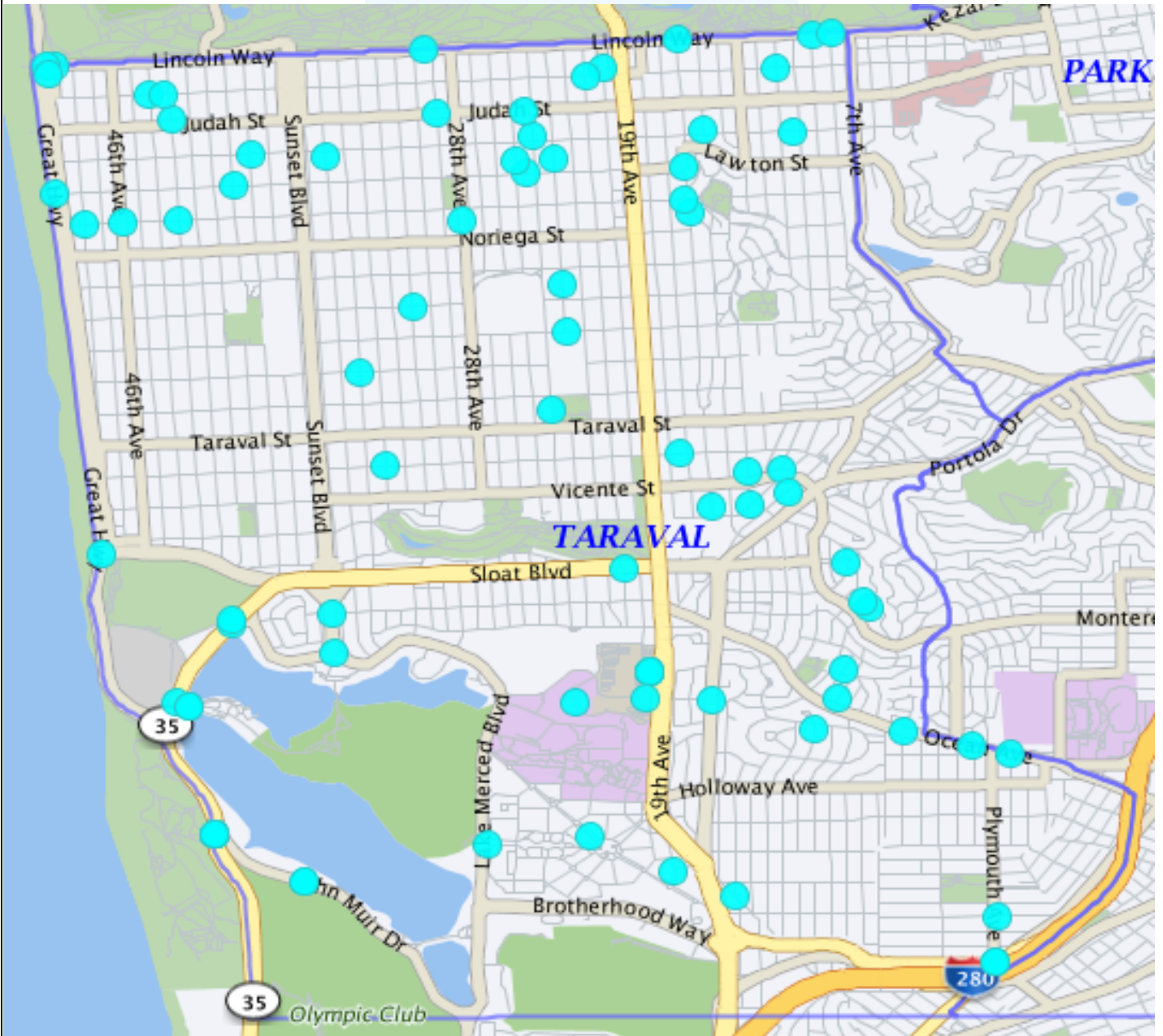


TARAVAL STATION



Auto Burglaries 10/01/18 – 10/25/18

Auto Burglaries	88
	88



If the dot does not add up to the numbers, there may be locations with numerous incident with the same address.

*Note: The map accurately reflects the information available at the time of preparation. Numbers may or may not change as more information becomes available.



Beware of Scams

Fake Check Scams

Consumers paid with phony checks for work or for items they're trying to sell, instructed to wire money back to buyer

Prizes/Sweepstakes/Free Gifts

Requests for payment to claim fictitious prizes, lottery winnings, or gifts

Recovery/Refund Companies

Scammers contact victims and claim the consumer owes money on a fictitious debt or to help recover money lost in a previous scam

Advance Fee Loans, Credit Arrangers

False promises of business or personal loans, even if credit is bad, for a fee upfront

Phishing/Spoofing

Emails pretending to be from a well-known source ask consumers to enter or confirm personal information

Computers: Equipment and Software

Scammers claim to offer "technical support" for computer problems and charge a fee to fix a nonexistent problem

Scholarships/Grants

For a fee, a "search company" offers to conduct customized search for scholarships or grants for students. Scammers take money and run or provide a worthless list

Friendship & Sweetheart Swindles

Con artist nurtures an online relationship, builds trust, and convinces victim to send money

Charitable Solicitations

Scammers contact victims claiming to represent non-existent charities (or real charities they don't actually work for) and ask for donations.



Definition of Suspicious Activity

Suspicious activity is any observed behavior that could indicate a crime-related incident has been committed, or about to be committed. Unusual items or situations: A vehicle is parked in an odd location, a package/luggage is unattended, a window/door is open that is usually closed, or other out-of-the-ordinary situations occur.

Examples of Suspicious Activity:

- An individual peering into vehicles, to try, and locate any valuables left unattended.
- An individual trying door handles to vehicles, and/or residences to gain access to the vehicle and/ or residence.
- An individual checking front doors of residences to locate any unattended packages or individuals following delivery trucks to see where the truck is dropping off packages.
- Please dial 911 to report crimes in progress, suspicious activity or for life threatening emergencies. If it is not an emergency, dial (415) 553-0123.



**See something.
Say something.**



Definition of Community Policing

Community policing, or community-oriented policing, is a strategy of policing that focuses on police building ties and working closely with members of the communities.

Homeless Outreach and Outreach to Drug Users:

Taraval Station has two officers that coordinate with city agencies to provide outreach and assistance to rehabilitate those who are dependent on illegal drugs and outreach to homeless individuals to connect them with resources and support.

Foot Patrols:

Taraval Station has 3 foot beat locations. These officers are assigned to Irving St, West Portal Ave and Ocean Ave.

Monthly Police Community Relations Meetings:

Community Meetings are going to be held continuously. Officers and sergeants also attend meetings with merchants groups, business groups, development authorities and others. Concerns are voiced and addressed through problem solving. These meeting will be on the third Tuesday of each month.

Email Updates:

Taraval Station will send out newsletter updates to residents in the District that alerts residents of crime trends, upcoming community events, crime prevention tips, and information on how to contact officers at the District Station.



Make the Right Call SF

Make the right call. Keep 9-1-1 available for emergencies.

9-1-1

Police, Fire & Medical

Available 24/7

Is there a danger to life, property or the environment?

Is there a crime in progress?

Is someone having a medical emergency and needs immediate assistance?

Is there a fire?

If you answered YES to any of these questions, immediately call 9-1-1.

3-1-1

City Services & Information

Available 24/7

Police reports for crimes not in progress such as:

-Auto Burglaries

-Petty Theft

-Vandalism

Report graffiti, potholes, abandoned vehicles, or blocked driveways.

Garbage and recycling services

Street and park maintenance

Property Tax Payments

Birth Certificates

Marriage Licenses

Business Registration

415-553-0123

Police Non-Emergency Assistance

Available 24/7

Noise complaints

Loitering

Citizen standby

MAKE THE RIGHT CALL		KEEP 9-1-1 AVAILABLE FOR EMERGENCIES	
9-1-1 POLICE, FIRE & MEDICAL AVAILABLE 24/7	3-1-1 CITY SERVICES & INFORMATION AVAILABLE 24/7	415-553-0123 POLICE NON-EMERGENCY ASSISTANCE AVAILABLE 24/7	
<ul style="list-style-type: none"> • Is there a danger to life, property or the environment? • Is there a crime in progress? • Is someone having a medical emergency and needs immediate assistance? • Is there a fire? If you answered YES to any of these questions, immediately call 9-1-1.	<ul style="list-style-type: none"> • Police reports for crimes not in progress such as: <ul style="list-style-type: none"> - Auto Burglaries - Petty Theft - Vandalism • Report graffiti, potholes, abandoned vehicles, or blocked driveways. • Garbage and recycling services • Street and park maintenance • Property Tax Payments • Birth Certificates • Marriage Licenses • Business Registration 	<ul style="list-style-type: none"> • Noise complaints • Loitering • Wellness checks 	
		 MAKETHERIGHTCALLSF.ORG	



Join The S.F.P.D. – San Francisco's Finest

The San Francisco Police Department welcomes dedicated men and women to join us in serving our City. I encourage you to apply to become one of San Francisco's finest.

The City and County of San Francisco invites you to join a highly respected police department and serve the citizens of one of the most beautiful cities in the country. San Francisco Police Officers perform a wide variety of duties to promote public safety and security, prevent crime and enforce the law. Police officers perform a number of essential functions. For example, they patrol districts to prevent and detect crime; respond to calls for assistance; conduct criminal investigations; interact with the community to build cooperation and support; pursue and arrest suspects; enforce traffic and parking laws; write reports and maintain records; work with superiors, peers, and others as a team; prepare for and participate in planned events; prepare for court and give testimony; and fulfill other administrative duties when required. This is much more than a job; it is an opportunity to build a career of which you can be proud.

Applying is Easy!

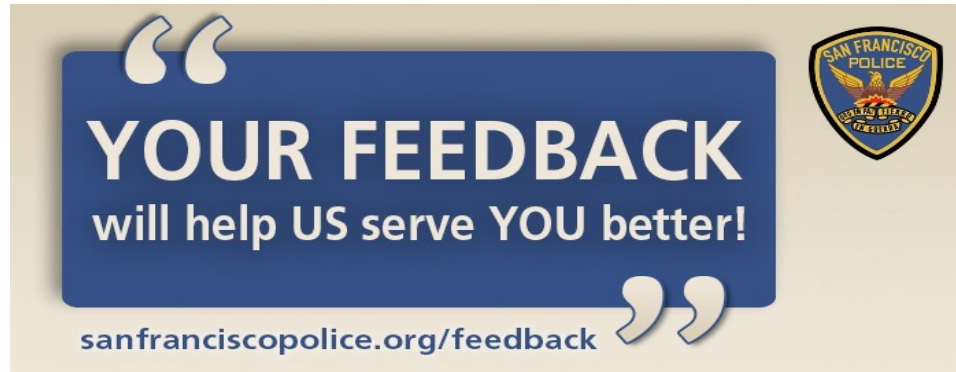
1. Apply with the City and County of San Francisco at (Entry Level (Q-2) Police Officer) Go to www.nationaltestingnetwork.com, choose law enforcement, and register to take the San Francisco exam (\$45). Financial assistance is available.
2. Choose an available exam date that's convenient for you.
3. Schedule your exam.

Have Questions? Contact the San Francisco Police Department Recruitment Unit

1245 3rd Street, 5th Floor, San Francisco, CA 94158
Phone: 415-837-7245
Fax: 415-575-6095

 joinsfpd@sfgov.org  twitter.com/SFPDRecruitment  facebook.com/SFPDRecruitment

The San Francisco Police Department values diversity in its workforce, and is committed to fair and equal treatment of all applicants for employment. Discrimination on the basis of sex, race, religion, color, national origin, ancestry, disability, medical condition, marital status, sexual orientation, or other protected categories is prohibited and unlawful.



YOUR FEEDBACK
will help US serve YOU better!

sanfranciscopolice.org/feedback

The SFPD wants to hear from YOU.

We are committed to excellence in law enforcement and are dedicated to the people, traditions and diversity of our City. Our mission is to provide service with understanding, response with compassion, performance with integrity and law enforcement with vision.

We welcome your comments. Let us know how we're doing, what we could be doing better and your thoughts on how your police department can work more closely with the community we proudly serve.

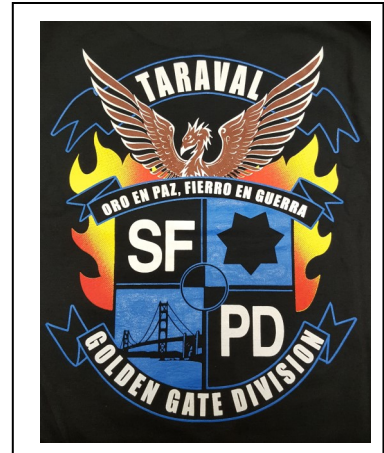
Visit us at sanfranciscopolice.org/feedback. Your feedback will help SFPD better serve our City. Comments will be reviewed by our Community Engagement Unit and forwarded to the relevant unit, department office or neighborhood station for review and follow up, if appropriate.

(If this is an emergency, please call 911. For non-emergencies, call 415-553-0123. You may also visit <http://sanfranciscopolice.org/police-commendation-complaint> for more information on providing input on SFPD policies and practices.)



SFPD RESOURCES

EMERGENCY: 911
Non-Emergency: 553-0123
Cell Phone 911: 911 / 553-8090
Customer Service Center: 311
SFPD Tip Line: 566-0115
Anonymous Tip-Line 575-4444
Chinese Tip Line: 315-2435
Text a Tip: 847411 (Tip 411)
Blessing Scam Hotline: 553-9219
Graffiti Abatement: 850-6951



TARAVAL STATION RESOURCES

Taraval Station: 759-3100
Captain Robert Yick: 759-3100 - robert.yick@sfgov.org
Patrol Lieutenants: 759-3100
Taraval Administration & Community Sgt.: 759-3120 – Sgt. Lynn Pomatto
Taraval Permits/ Code Abatement: 759-3123 – Officer Matt Faliano
Neighborhood Deputy District Attorney: 553-1868 - Maggie Buitrago
Website: www.taraval.org / Taraval Station E-mail: SFPDTaravalStation@sfgov.org
To Reserve Our Community Room: taravalcommunityroom@sfgov.org

OTHER RESOURCES

Dept. of Parking & Traffic: 553-1943
DPW Dispatch 695-2020
S.A.F.E. 553-1984

ALL EMERGENCY CALLS: 911

We, the members of the San Francisco Police Department, are committed to excellence in law enforcement and are dedicated to the people, traditions and diversity of our City. In order to protect life and property, prevent crime and reduce the fear of crime, we will provide service with understanding, response with compassion, performance with integrity and law enforcement with vision.